

Heavy Duty **OX BOX**® Sizes

** Denotes stock size

TWIN-SHEET MIRROR IMAGE

Model	Outside Dim. W x L	Sleeve Inside Dim. W x L	Pallet Weight	Ever-Lok® 2 (width/length)	Loaded 48' Trailer Pallets/ 36" or 42" Sleeves	Loaded 53' Trailer Pallets/ 36" or 42" Sleeves	Nested Load 48' Trailer	Nested Load 53' Trailer
BP4548 ID	46.50" x 49.50"	41.75" x 44.75"	27lbs.	W & L	96/48	104/52	624	676
BP4548 OD	45" x 48"	41.75" x 44.75"	27lbs.	W & L	96/48	104/52	624	676
BP3345 wide channel	40" x 48"	33.69" x 41.88"	25lbs.	L	52/52	60/60	585	675
BP3454 narrow channel	40" x 48"	37.13" x 45.38"	25lbs.	L	52/52	60/60	585	675

TWIN-SHEET AND COVER

BP4048CTP**	40" x 48"	36.88" x 45.13"	25lbs.	W & L	52/52/52	60/60/60	585	675
BP4545	45" x 45"	43" x 42.75"	27lbs.	W & L	48/48/48	52/52/52	360	416

Other Heavy Duty **OX BOX**® Sizes Available

TWIN-SHEET MIRROR IMAGE

BP3544

BP4848

BP4154

BP4863

TWIN-SHEET PALLET & COVER

BP4647 (RP)



BP4048WTP PALLET

Light-weight, twin sheet thermoformed plastic construction for durability and long life. Locking pallet and cover create safer stacks. The BP4048WTC pallets significantly reduce costs compared to expensive and heavy one-way bulk containers and can last for hundreds of trips. To be used with BP4048WTC-cover. Standard color: Black

FEATURES/BENEFITS

- Four-way entry for quicker more efficient handling
- Interlocking pallet and cover for secure stacking
- Light -weight to reduce shipping costs
- Fully nestable to save space on return shipping and while stored
- Legs without drain holes
- Weather resistant - resists UV rays
- Conveyable

OPTIONS

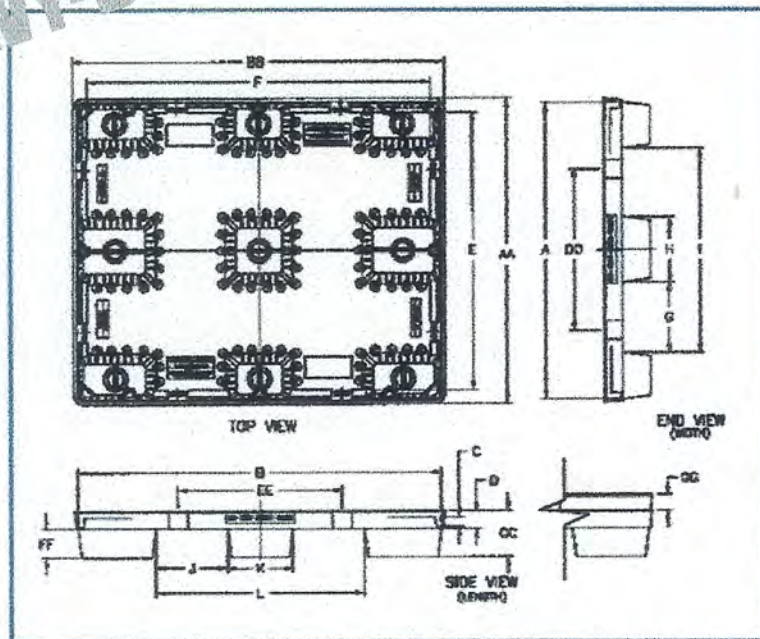
- Custom color(s)
- Color stripe(s)
- 8 logo areas: allows customized, molded art on top surface
- Sleeve lock plus
- Leg drain holes eliminate water accumulation
- Ever-Lok® locations for package/unit Security
- For alternative identification options, contact Customer Service

Notice: The information contained herein is offered without charge for use by technically qualified personnel at their discretion and risk. Each user must carefully consider the application requirements and final product suitability for their particular application. All statements, technical information and recommendations contained herein are based on data which we believe to be reliable, but the accuracy or completeness thereof is not guaranteed and no warranty of any kind is made with respect thereto.

Your **OX BOX**

Representative is:

HEAVY-DUTY



Item #6114671

DIMENSIONS

A	WIDTH I.D.	38.38"	K	CENTER LEG/LENGTH	8.63"
B	LENGTH I.D.	46.43"	L	TOTAL SPAN/LENGTH	27.38"
C	RECESS HEIGHT	1.25"	AA	OVERALL WIDTH	40.00"
D	LIP HEIGHT	2.38"	BB	OVERALL LENGTH	48.00"
E	SLEEVE WIDTH I.D.	36.88"	CC	OVERALL HEIGHT	6.13"
F	SLEEVE LENGTH I.D.	45.13"	DD	EVER-LOK CENTER-WIDTH	21.50"
G	FORK WIDTH/WIDTH	9.25"	EE	EVER-LOK CENTER-LENGTH	21.50"
H	CENTER LEG/WIDTH	8.75"	FF	FORK HEIGHT	3.75"
I	TOTAL SPAN/WIDTH	27.25"	GG	NEST HEIGHT	2.38"
J	FORK WIDTH/LENGTH	9.38"			

PERFORMANCE

WEIGHT	PALLET ONLY		PALLET WITH 1100# CORRUGATED SLEEVE 36" HT.	
	FLOOR	FORK	FLOOR	FORK
23 lbs.	7500	800	1350	



BP4048WTC COVER

Light-weight, twin sheet thermoformed plastic construction for durability and long life. Cover interlocks with pallet legs creating a stable, safer stack. The BP4048WTC pallets significantly reduce costs compared to expensive and heavy one-way bulk containers and can last for hundreds of trips. To be used with BP4048WTP – pallet. Standard color: Black

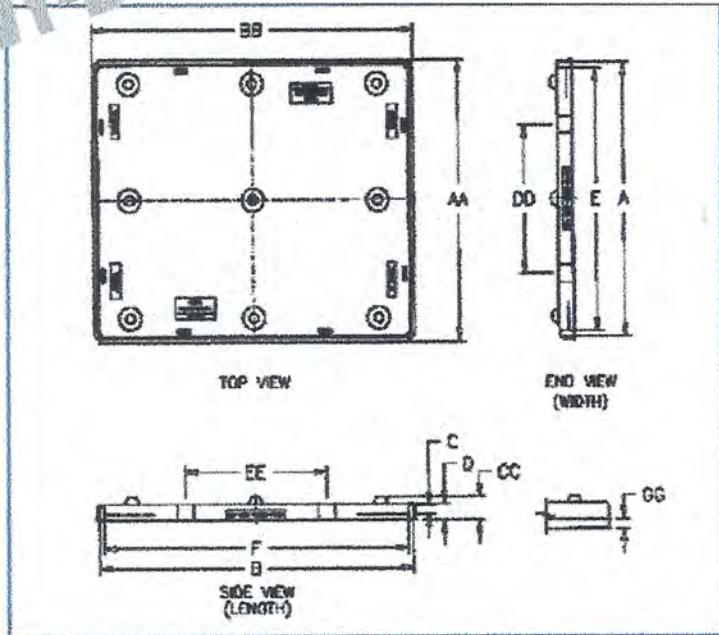
HEAVY-DUTY

FEATURES/BENEFITS

- Interlocking pallet/cover for secure stacking
- Light-weight to reduce shipping costs
- Fully nestable to save space on return shipping and while stored
- Weather resistant – resists UV rays
- Conveyable
- Legs without drain holes

OPTIONS

- Custom color(s)
- Color stripe(s)
- 8 logo areas: allows customized, molded art on top surface
- Sleeve lock locations for package/unit security
- For alternative identification options, contact Customer Service



Item #6115184

DIMENSIONS

A	WIDTH I.D.	38.38"	K	CENTER LEG/LENGTH	N/A
B	LENGTH I.D.	46.63"	L	TOTAL SPAN/LENGTH	N/A
C	RECESS HEIGHT	1.25"	AA	OVERALL WIDTH	40.00"
D	LIP HEIGHT	2.38"	BB	OVERALL LENGTH	48.00"
E	SLEEVE WIDTH I.D.	36.88"	CC	OVERALL HEIGHT	3.38"
F	SLEEVE LENGTH I.D.	45.13"	DD	EVER-LOK CENTER-WIDTH	21.50"
G	FORK WIDTH/WIDTH	N/A	EE	EVER-LOK CENTER-LENGTH	21.50"
H	CENTER LEG/WIDTH	N/A	FF	FORK HEIGHT	N/A
I	TOTAL SPAN/WIDTH	N/A	GG	NEST HEIGHT	1.75"
J	FORK WIDTH/LENGTH	N/A			

Notice: The information contained herein is offered without charge for use by technically qualified personnel at their discretion and risk. Each user must carefully consider the application requirements and final product suitability for their particular application. All statements, technical information and recommendations contained herein are based on data which we believe to be reliable, but the accuracy or completeness thereof is not guaranteed and no warranty of any kind is made with respect thereto.

Your **OX BOX**
Representative is:

PERFORMANCE

WEIGHT	PALLET ONLY		PALLET WITH 1100# CORRUGATED SLEEVE 36" HT.	
	FLOOR	FORK	FLOOR	FORK
17 lbs.				